

# Kirk Douglas Theatre

2008/2009 Season

FIRST PRODUCTION

The Civilians'

## This Beautiful City

Written by Steven Cosson and Jim Lewis

Music and Lyrics by Michael Friedman

Directed by Steven Cosson

West Coast Premiere.

September 21 – October 26, 2008

SECOND PRODUCTION

## The Little Dog Laughed

By Douglas Carter Beane

Directed by Scott Ellis

November 16 – December 21, 2008

THIRD PRODUCTION

## Taking Over

Written and Performed by Danny Hoch

Directed by Tony Taccone

January 21 – February 22, 2009

FOURTH PRODUCTION

## Bengal Tiger at the Baghdad Zoo

By Rajiv Joseph

Directed by Moisés Kaufman

World Premiere.

May 10 – June 7, 2009

FIFTH PRODUCTION

## Heddatron

By Elizabeth Meriwether

Directed by Alex Timbers

West Coast Premiere.

July 5 – August 2, 2009



Kirk Douglas  
Theatre  
in Downtown Culver City

CENTER THEATRE GROUP BOARD OF DIRECTORS

2008/2009 OFFICERS

HONORARY CHAIRMAN  
Lew R. Wasserman†

CHAIRMAN  
Richard Kagan

PRESIDENT  
Martin Massman

VICE PRESIDENTS  
Shelley Freeman  
Ava Fries  
Brindell Roberts Gottlieb  
Darell L. Krasnoff

SECRETARY  
Martin C. Washton

ASSISTANT SECRETARY  
Carol Mancino

TREASURER  
Harold Applebaum

ASSISTANT TREASURER  
William Howard Ahmanson

PAST PRESIDENTS  
Lew R. Wasserman†  
Marshall Berges†  
Armand S. Deutsch†  
Walter Mirisch  
Henry C. Rogers†  
Richard E. Sherwood†  
J. David Haft†  
Lawrence J. Ramer\*  
Stephen F. Hinchliffe Jr.  
Phyllis Hennigan  
Richard Kagan

BOARD MEMBERS

Ronald J. Arnault\*  
Pamela Beck  
Judith Beckmen  
Dannielle Campos Ramirez  
Marcy Carsey  
Geoffrey Cowan  
Gordon Davidson\*  
Cástulo de la Rocha  
Charles Dillingham  
Barbara Fodor  
Amy R. Forbes  
Eric R. Garen  
Patricia Glaser  
Susan Grode  
Brian Hargrove  
Tommy Hawkins  
Phyllis Hennigan  
Stephen F. Hinchliffe, Jr.  
Ernest M. Hiroshige  
Leonard Hirshan\*  
Andrew S. Kane  
Samuel X. Kaplan\*  
Nancy Olson Livingston\*  
O. Kit Lokey  
Walter Mirisch  
Diane Morton\*  
Jo Muse  
Dr. Steven Nagelberg  
Edward B. Nahmias  
Lawrence J. Ramer\*  
Michael Ritchie  
Laura Rosenwald  
Dr. J. Nathan Rubin  
Marilyn Stambler  
Eva Stern  
Louise Taper  
James A. Thomas  
Corina Villaraigosa  
Frederick R. Waingrow

\*Director Emeritus  
†Deceased



Julie White.



Julie White and Johnny Galecki.



Johnny Galecki.

New York production photos by Carol Rosegg.



Ahmanson Theatre  
Mark Taper Forum  
Kirk Douglas Theatre

Join us in **THE LOUNGE!**

Our newly designed bar area of the lobby now features pre-show box dinners, sandwiches and other snacks. On Thursdays, Fridays and Saturdays, The Lounge remains open after performances with a full bar, music and lively conversation.



**Center Theatre Group**

L.A.'s Theatre Company

Ahmanson Theatre  
Mark Taper Forum  
Kirk Douglas Theatre

**Michael Ritchie**, ARTISTIC DIRECTOR   **Charles Dillingham**, MANAGING DIRECTOR  
**Gordon Davidson**, FOUNDING ARTISTIC DIRECTOR

Presents

# The Little Dog Laughed

By **Douglas Carter Beane**

With (in alphabetical order)

**Johnny Galecki**   **Brian Henderson**   **Zoe Lister-Jones**   **Julie White**

Set Design  
**Allen Moyer**

Costume Design  
**Jeff Mahshie**

Lighting Design  
**Donald Holder**

Original Music and Sound  
**Lewis Flinn**

Sound Design  
**Cricket S. Myers**

Casting  
**Mele Nagler, CSA**

Associate Producer  
**Neel Keller**

Production Stage Manager  
**Gregory T. Livoti**

Directed by  
**Scott Ellis**

Original Broadway Production Produced by  
Roy Gabay   Susan Dietz  
Morris Berchard   Steve Bozeman   Ted Showdon  
Jerry Frankel/Doug Nevin   Jennifer Manocherian/Ina Meibach

World Premiere produced by Second Stage Theatre, New York, December 13, 2005  
Carole Rothman, Artistic Director

*The Little Dog Laughed* by Douglas Carter Beane is presented by arrangement with Dramatists Play Service, Inc., in New York.

**November 16 - December 21, 2008**  
**Kirk Douglas Theatre**

**Cast**

(in order of appearance)

Diane . . . . . **Julie White**

Mitchell . . . . . **Brian Henderson**

Alex . . . . . **Johnny Galecki**

Ellen . . . . . **Zoe Lister-Jones**

*The Little Dog Laughed* will be performed with one 15-minute intermission.

**Standbys**

Standbys never substitute for listed performers unless a specific announcement is made at the time of the performance.

For Johnny Galecki – **Jeremy Glazer**.



Please turn off all electronic devices such as cellular phones, PDAs, beepers and watch alarms. The use of any recording device, either audio or video, and the taking of photographs, with or without flash, is strictly prohibited.

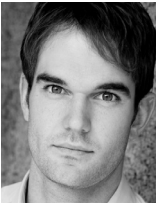
## Who's Who



### JOHNNY GALECKI

(Alex). Mr. Galecki originated the role of Alex off-Broadway at the Second Stage Theatre. Broadway: *The Little Dog Laughed*

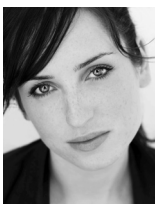
(received a 2007 Theatre World Award for outstanding Broadway debut). Other theatre credits include *The Drawer Boy* and *Pot Mom* (at Chicago's Steppenwolf Theatre), *The Member of the Wedding* (Stage Left Theatre, Joseph Jefferson nomination) and *Galileo* (Goodman Theatre), among others. This production is Mr. Galecki's Los Angeles stage debut. Television: currently starring in the *The Big Bang Theory*; *Roseanne*, *My Boys*, *My Name is Earl*. Film: *Hancock*, *The Opposite of Sex*, *Bounce*, *Happy Endings*, *Vanilla Sky*, *I Know What You Did Last Summer*, *Suicide Kings*, *Bookies*, *Chrystal*, *Playing Mona Lisa* and the upcoming *Table for Three*. Deep gratitude to Casey for support and understanding.



### BRIAN HENDERSON

(Mitchell). Broadway: *The Little Dog Laughed* (Cort Theatre). Off-Broadway: *Election Day* (Second Stage), *The Mistakes Madeline Made*

(Naked Angels), *Getting Home* (Second Stage), *In The Wings* (Promenade Theatre), *As You Like It* (Shakespeare in Central Park). Other New York: *All My Sons* (Shubert Theatre). Regional: *The Shape of Things* (Barrington Stage Co.), *The Seagull* (Actors Theatre Sacramento), *The Winter's Tale* (Shakespeare on the Sound), *Benched* (Sacramento Theatre Co.). Film: *Don't Look Up* (2009), *Samantha* (2008 CineVegas Fest.). Television: *The Guiding Light*. Education: MFA from NYU's Graduate Acting Program. Other: Thanks to Em, the Fam, Bill, David and Cat.



### ZOE LISTER-JONES

(Ellen). Broadway: *The Little Dog Laughed*. Off-Broadway: *The Little Dog Laughed* (Second Stage), *The Marriage of Bette and Boo* (The

Roundabout), *The Accomplices* (The New Group), *Codependence is a Four*

*Letter Word*: a one-woman show (PS-122), which she wrote and produced. Film: *All Good Things*, *State of Play*, *Arranged*, *The Marconi Bros.*, *Goyband*, *Turn the River*, *Armless*, and the upcoming *Breaking Upwards*, which she co-wrote and produced. Television: the upcoming HBO series *The Washingtonienne* (executive produced by Sarah Jessica Parker), *The Class*, *Kidnapped*, *Law and Order*, *Law & Order: Criminal Intent*, *Law & Order: SVU*, *Law & Order: Trial by Jury* and Adult Swim's upcoming live action series *Delocated*. Graduate of NYU Tisch School of the Arts and The Royal Academy of Dramatic Arts.



### JULIE WHITE (Diane)

is happy to be stepping back into Diane's killer shoes after originating the role at Second Stage (Obie Award, Drama

Desk, Drama League and Outer Critics nominations) and subsequently on Broadway at the Cort Theatre (Tony Award). In the Southland she has been seen in *Expecting Isabel* at the Taper, *Dinner With Friends* at South Coast (and in the New York production at the Variety Arts) and *Gun Play* with Naked Angels. In New York she was seen this spring in *From Up Here* at Manhattan Theatre Club (Drama Desk and Drama League nominations). Other New York credits include *The Heidi Chronicles* (Broadway), *Fiction* at the Roundabout (Drama League nomination), the one-woman play, *Bad Dates*, written for her by Theresa Rebeck, she went on to do the show at Boston's Huntington Theatre (Elliot Norton Award) and the Dallas Theater Center; *The Family of Mann* and *Spike Heels* at Second Stage (also by Ms. Rebeck). Television: *Grace Under Fire* as Nadine, Alan Ball's *Six Feet Under* as Mitzi Dalton Huntley, Dr. Anne Morela on *Law & Order: SVU* (whenever they need a neurosurgeon) and spent a season with ABC's *Cavemen*. Films include *Michael Clayton*, *The Astronaut Farmer*, *The Nanny Diaries*, *The Heidi Chronicles* and *Transformers*. Upcoming: Dreamworks Animation's *Monsters Versus Aliens*, *Breaking Upwards* and *Transformers 2, Revenge of the Fallen*.



### JEREMY GLAZER

(Standby for Johnny Galecki). CTG debut! *A Picture of Dorian Gray* (Two L.A. Drama Critics Circle Awards, Ovation

nominations, Boston Court), *Anything* (GLAAD Media Award nomination, Ovation nomination), *7 Redneck Cheerleaders* (Critics Pick L.A. Times), *The Sand Storm*, *Me Too*, *Love Bites*, *Criminal Genius*, *Risk Everything* and produced and starred in *Scooter Thomas Makes It to the Top of the World*. Elephant Company member. Film: Oscar and Golden Globe-winning *Letters From Iwo Jima* (Clint Eastwood, director), *Good Dick* (Sundance 2008), *Save Me* (Sundance 2007), *When Do We Eat?* (young Jack Klugman), *Moonlight Serenade* (with Amy Adams), *The Last Resort*, *The Cleansing*, *My Last Page* and *Roadie*. Television: *Eli Stone* (recurring), *Numb3rs*, *ER*, *Veronica Mars*, *Angel*, *7th Heaven*, *Providence* and many commercials. Love to C\$, FB, family and friends. [www.jeremyglazer.com](http://www.jeremyglazer.com).

### DOUGLAS CARTER BEANE (Playwright).

Douglas Carter Beane's credits on Broadway include the stage adaptation of the film *Xanadu* (Outer Critics Circle and HX Awards for Best Musical, Drama Desk Award for Best Book, and four Tony nominations including Best Musical) and *The Little Dog Laughed* (Tony Award nomination, GLAAD Media Award and HX Award for Best Play). His other plays include *As Bees In Honey Drown* (Outer Critics Circle John Gassner Award), *Music From A Sparkling Planet*, *The Country Club*, *Advice From A Caterpillar*, *The Cartells* and *Mondo Drama*. Upcoming projects include *The Big Time*, *The Bandwagon* and *Mr. & Mrs. Finch*. He wrote the film adaptation of his play *Advice From A Caterpillar*, as well as the screenplay of *To Wong Foo*, *Thanks For Everything*, *Julie Newmar*. He resides in New York City with his partner, composer Lewis Flinn and their son, Cooper and daughter, Gabrielle.

### SCOTT ELLIS (Director). Broadway:

*Curtains* (Tony nomination), *The Little Dog Laughed* (Drama League nomination), *Twelve Angry Men* (Tony, Drama Desk nominations, Outer Critics

Circle and Drama Desk Awards, Best Revival), *The Boys From Syracuse*, *The Man Who Had All the Luck*, *The Rainmaker*, 1776 (Drama Desk, Tony nomination Best Director), *She Loves Me* (Tony nomination, Drama Desk, Outer Critics Circle Awards), *Picnic* (Outer Critics nomination), *Company*, *A Month in the Country*, *Steel Pier* (Tony nomination, Drama Desk, Outer Critics Circle Awards). London: *She Loves Me* (Olivier Award). Off-Broadway: *Streamers*, *Entertaining Mr. Sloane*, *The Waverly Gallery*, *The Dog Problem*, *That Championship Season*, *Dark Rapture*, *And the World Goes 'Round: The Songs of Kander and Ebb* (Drama Desk, Outer Critics Circle Awards) and *Flora, the Red Menace* (Drama Desk nomination). L.A. Opera: *A Little Night Music*. Television: *30 Rock* (Emmy nomination, Best Director), *The Closer*, *Weeds*, *Desperate Housewives*, *Frasier*. Mr. Ellis is the Associate Artistic Director of the Roundabout Theatre Company.

**ALLEN MOYER** (*Set Design*). Broadway: *Grey Gardens* (Tony/Drama Desk nominations, Henry Hewes Award), *Thurgood*, *The Little Dog Laughed*, *The Constant Wife*, *Twelve Angry Men*, *In My Life*, *Reckless*, *The Man Who Had All the Luck*. Off-Broadway: *The New Century* (Lincoln Center Theater); *Mr. Marmalade*, *The Dazzle* (Roundabout); *Landscape Of The Body*, *A Few Stout Individuals* (Signature Theatre Company); *Lobby Hero* (Playwrights Horizons), *This Is Our Youth* (New Group/Second Stage); productions for the Drama Dept. including Douglas Carter Beane's *As Bees In Honey Drown*, *Music From a Sparkling Planet* and *Mondodrama*. Regional: *Passion Play* (Yale Rep, Goodman), also Steppenwolf, La Jolla Playhouse, Old Globe, Center Stage. Opera: *Orfeo ed Euridice* (Metropolitan Opera), *The Grapes of Wrath* (Minnesota Opera), and productions for San Francisco Opera, Santa Fe Opera, New York City Opera, Glimmerglass Opera, Scottish Opera and Houston Grand Opera. Dance: *Sylvia* (San Francisco Ballet), *Romeo and Juliet: On Motifs of Shakespeare* (Mark Morris Dance Group). Recently awarded an OBIE for Sustained Excellence.

**JEFF MAHSHIE** (*Costume Design*). Broadway: *The Little Dog Laughed*. Off-Broadway: *Hurlyburly* (Drama Desk nomination), *Next To Normal*, *Privilege*, *Show People*, *The Scene*, *Laughing Wild*, as well as *The Corn Is Green*. Jeff is also

a fashion designer; his work has been shown at Bryant Park and has been featured in such magazines as *InStyle*, *Harper's Bazaar* and *Vogue* as well as on the red carpet for many awards shows.

**DONALD HOLDER** (*Lighting Design*). Broadway: 30 productions, including *South Pacific* (2008 Tony Award, Drama Desk nomination), *Les Liaisons Dangereuses*, *A Streetcar Named Desire*, *Gem of The Ocean*, *Movin' Out*, *Juan Darien* (all Tony-nominated), *The Lion King* (Tony, Drama Desk, Outer Critics Circle Awards), *Cyrano de Bergerac*, *Radio Golf*, *The Little Dog Laughed*, *Thoroughly Modern Millie* and *The Boy From Oz*. Recent off-Broadway: *The Marriage of Bette and Boo*, *Romantic Poetry*, *Saved*, *Almost an Evening*, *The Pain and the Itch*, *Romeo and Juliet* (Delacorte). Regional Theatre: Center Stage, Steppenwolf, Goodman, Arena Stage, South Coast Repertory, Huntington, Seattle Rep, Intiman, Williamstown, Old Globe, La Jolla Playhouse, many others. Mark Taper Forum: *Pippin* (upcoming), *The House of Blue Leaves*, *Jitney*, *Hughie*, *Spunk*, *Yellow Face*, *Glimmer*, *Glimmer and Shine*, many others. LA Opera: *Grendel*.

**LEWIS FLINN** (*Original Music and Sound*). Broadway: *The Little Dog Laughed*; Off-Broadway: Charles Busch's *Die Mommie Die* (Daryl Roth/New World Stages), *The Busy World is Hushed* (Playwrights Horizons), *Good Boys and True*, *Privilege*, *Show People* (Second Stage), *Old Money* (Lincoln Center), *Music from A Sparkling Planet*, *Mondo Drama* (Drama Dept), *The Complete Works Of W. Shakespeare (abridged)* (The Century Center), among others. Regional: *The Third Story* (La Jolla), many others at The Cleveland Play House, Old Globe, Hartford Stage and the Geffen (L.A.). Musicals include *Lysistrata Jones*, with Douglas Carter Beane, *On Girl*, with Steven Sater, *Down There*, with Brian Crawley, *Like Love*, with Barry Jay Kaplan, (NYMF 2007) and *The Winner*, with Joe Sutton (Lyric Stage, Dallas, TX 2007). Guest artist at Cornell, Dartmouth and Boston Conservatory. Television: *The Power of 10* (CBS), *Million Dollar Password* (CBS) and numerous national commercials. www.lewisflinn.com

**CRICKET S. MYERS** (*Sound Design*). Broadway: assisted M. Roth *Brooklyn Boy* (MTC: Biltmore). Off-Broadway Designs: *The Marvelous Wonderettes* (Westside Arts Upstairs). LORT Designs: *The School of*

*Night, Nightingale* (Mark Taper Forum); *Two Unrelated Plays*, *Come Back, Little Sheba* (Kirk Douglas Theatre); *Some Girl(s)*, *Emergency* (Geffen Playhouse); *Orson's Shadow* (Pasadena Playhouse); *The Marvelous Wonderettes* (Laguna Playhouse). Cricket has designed over 200 productions in Los Angeles, in theatres such as the Colony Theatre, Furious Theatre Company, Celebration Theatre and West Coast Ensemble. In 2007, she won a Garland Award (three Honorable Mentions as well), and was nominated for two Ovation Awards, an LADCC and an NAACP Award. Named a "Young Designer to Watch" by Live Design Magazine, April 2007 and an "Artist to Watch" by LA Stage Magazine, Sept 2007. www.cricketsmyers.com

**MELE NAGLER** (*Casting*). Select Theatre Credits: *The Little Dog Laughed* (Broadway), *Streamers* (Huntington and Roundabout), *Good Boys & True* (Second Stage), *Body Awareness* (Atlantic), *The Constant Wife* (Roundabout), *Twelve Angry Men* (Roundabout and National Tour), *Howard Katz* (Roundabout), *Entertaining Mr. Sloane* (Roundabout), *Mr. Marmalade* (Roundabout), *The Paris Letter* (Roundabout), *Intimate Apparel* (Roundabout and Center Theatre Group). Williamstown Theatre Festival Summer 2008. Film: *A Home At The End Of The World*, *War Boys* (upcoming). Television (selected): *Gossip Girl*, *Brotherhood*. She is a partner in MelCap Casting with David Caparelliottis.

**GREGORY T. LIVOTI** (*Production Stage Manager*). Broadway: *Coram Boy*, *The Pajama Game*. National Tour: *Disney's High School Musical*. Off-Broadway: *The Marriage of Bette & Boo*, *The Overwhelming*, *Pig Farm* (Roundabout); *Dutchman*, *Bhutan* (Cherry Lane); *Richard II* (Classic Stage); *See What I Wanna See* (Public); *Big Bill* (Lincoln Center). Regional: Five seasons at the Williamstown Theatre Festival; Huntington; Boston Playwright's. Graduate of Boston University School of Theatre.

**CHRISTOPHER J. PAUL** (*Stage Manager*). Christopher is honored to be a part of such an exciting production. His select regional stage management credits include the pre-Broadway run of *9 to 5: The Musical* (Ahmanson Theatre); *Animal Logic* (CTG's P.L.A.Y. Department);

*Shipwrecked!*, *Joan Rivers: A Work in Progress* by a *Life in Progress*, *Third, Fat Pig*, *A Picasso* and *Ricky Jay & His 52 Assistants* (Geffen Playhouse). Christopher attended the University of California, Los Angeles and Santa Rosa Junior College. He is also a proud member of Actor's Equity.

**MICHAEL RITCHIE** (*Artistic Director*) is now in his fourth season as Center Theatre Group's Artistic Director and has led over 50 productions to the Ahmanson, Taper and Douglas stages. From 1996 to 2004, Michael served as producer of the Williamstown Theatre Festival. Prior to that he was a Production Stage Manager in NYC. In his first three seasons at CTG, he premiered the musicals *The Drowsy Chaperone* and *Curtains* (both of which moved to Broadway and received a total of 21 Tony Award nominations), *13* (which opened on Broadway in October) and *9 to 5: The Musical*, which is set to open on Broadway in April 2009. He has produced 15 world premieres including the musicals *Bloody Bloody Andrew Jackson* and *Sleeping Beauty Wakes*, and the plays *Water & Power*, *Nighthawks* and *Yellow Face*; and he presented a broad range of plays and musicals ranging from *Dead End* to *Romance* to *The Black Rider* to blockbusters such as *Jersey Boys*, *The Color Purple* and *Edward Scissorhands*. In addition, Michael inaugurated CTG's New Play Production Program, designed to foster the development and production of new work.

**CHARLES DILLINGHAM** (*Managing Director*) for the past 17 years has supervised all development, marketing, administrative and financial aspects of Center Theatre Group. Prior to CTG, he was CEO of The Entertainment Corporation USA, presenting the Bolshoi Ballet, Bolshoi Opera, Kirov Ballet, Kirov Opera and Royal Ballet at the Metropolitan Opera House and on U.S. tours. He was executive director of American Ballet Theatre when Mikhail Baryshnikov was artistic director, managing director of the Brooklyn Academy of Music Theatre Company, general manager of the American Conservatory Theatre in San Francisco and general manager of the Williamstown Theatre Festival. He has served on the board of LA Stage Alliance and on theatre advisory panels at the California Arts Council and the National Endowment for the Arts. He is Vice President of the League of Resident Theatres, a member of the Board of Councilors of the USC School of Theatre and the Board of Arts for L.A.

**DOUGLAS C. BAKER** (*General Manager*) is now in his 19th season at CTG. Previously, he managed Broadway and touring productions including *Tru*, *Born Yesterday*, *The Gospel at Colonus*, *Annie*, *A Chorus Line*, *Working*, *The Wiz* and *Legends!* starring Mary Martin and Carol Channing which premiered at the Ahmanson Theatre in 1986. Baker is a

graduate of Albion College, is an active member of the Broadway League, the Independent Presenters Network and is a proud member of the Association of Theatrical Press Agents and Managers.

**NEEL KELLER** (*Associate Producer*). For CTG Neel has directed *Pyrenees*, *Stones in His Pockets* and *Good Thing*. He has also directed and produced plays and musicals at theatres across the country and served, in wildly varying capacities, on the staffs of La Jolla Playhouse, Williamstown Theatre Festival, Remains Theatre, Lincoln Center Theater, the American National Theatre and *Jerome Robbins' Broadway*.

**GORDON DAVIDSON** (*Founding Artistic Director*) led the Taper throughout its first 38 seasons, guiding over 300 productions to its stage and winning countless awards for himself and the theatre – including the Tony Award for theatrical excellence, Margo Jones Award, The Governor's Award for the Arts and a Guggenheim fellowship. *The Kentucky Cycle* and *Angels in America* (Part One) won the Pulitzer in consecutive years and, in 1994, three of the four plays nominated for the Tony Award for Best Play were from the Taper (*Angels in America* won). In 1989 Gordon took over the Ahmanson and, in 2004, he produced the inaugural season in the Kirk Douglas Theatre.

Additional Staff for *The Little Dog Laughed*

Stage Manager . . . . . Christopher J. Paul  
 Associate Costume Designer . . . . . Kyle LaColla  
 Associate Lighting Designer . . . . . Karen Spahn  
 Assistant Scenic Designer . . . . . Warren Karp  
 Assistant Lighting Designer . . . . . Christopher Kuhl  
 Master Carpenter . . . . . Chad Smith  
 Automation Operator . . . . . Victor Cobos  
 Light Board Operator . . . . . Aaron Staubach  
 Production Electrician . . . . . Meghan Hong  
 Deck Manager . . . . . Lorely Trinidad  
 Deck Crew . . . . . Laura Estrada  
 Wardrobe . . . . . Colleen KH Hagerty  
 Wigs . . . . . Tara Shucart  
 Production Assistant, NYC . . . . . Jillian M. Oliver  
 Production Assistant, L.A. . . . . Laura Perez  
 Prop Coordinator, NYC . . . . . Susan Barras  
 Prop Artisans . . . . . Merrienne Nedreberg  
 Soft Goods . . . . . Mara Holland  
 Prop Shopper . . . . . Allison Leach  
 Stage Door Attendants . . . . . John Brooks, Ian Holiday,  
 Christopher Nucho

**SPECIAL THANKS**

Lord and Taylor, Jessica Weinstein,  
 Nile Cmlyo-Taylor, Nickelson Wooster

**TECHNICAL CREW**

John Bass, Randy Bosh, Katrina Coulourides, Ben Courtney, Marisa Day, Lauren Drzata, Craig Gaff, Cody Goulder, Jaclyn Kalkhurst, Amber Koehler, Mark Maldonado, Eliseo Matias, Mark Migdal, Boude C. Moore, David Petersen, Katie Polebaum, Jennifer Skinner, Boston Stergis, Ryan Tirrell, Charlotte Wheeler, Erin Whitcomb, Michael Zaragoza, Ghost Nickerson.

**GUEST SERVICES**

Joey Acuna, Trevor Algatt, Lauren Baxa, Benito Cardenas, Bonita Carter, Marilyn De Paula, Ignacia Delgado, Liz English, Angela Garcia, Meghan Hong, Tammy Johnson, Constance Lopez, Albert Meijer, Julie Morris, Janice Engle Motuapuaka, Lizzy Motuapuaka, Nicole Naito, Lisa Anne Nicolai, Brian Nitzkin, Ilona Pacek, Michael Pappas, Jon Redding, Joe Ruthenberg, Ashley Steed, Kotaro Watanabe, Tonni Williams

**CREDITS**

Set constructed by The Scenic Route. Costume support provided by the Center Theatre Group Costume Shop. Rehearsed at the Roundabout Rehearsal Studios. L.A. production photography by Craig Schwartz.

**WEBSITE**

CenterTheatreGroup.org



The Actors and Stage Managers employed in this production are members of Actors' Equity Association, the Union of Professional Actors and Stage Managers in the United States.



United Scenic Artists represents the designers and scenic painters for the American theatre.



The director is a member of the Society of Stage Directors and Choreographers, Inc., an independent labor union

Center Theatre Group is a member of the American Arts Alliance, the League of Resident Theatres (LORT), Independent Producers' Network, League of American Theatres and Producers, LA Stage Alliance and National Alliance of Musical Theatre, and is a constituent of Theatre Communications Group (TCG), the national service organization for the non-profit professional theatre.

**CENTER THEATRE GROUP L.A.'s Theatre Company**  
 MICHAEL RITCHIE, Artistic Director CHARLES DILLINGHAM, Managing Director  
 DOUGLAS C. BAKER, General Manager

**ARTISTIC**

NEEL KELLER ..... Associate Producer  
 KELLEY KIRKPATRICK ..... Associate Producer  
 DIANE RODRIGUEZ ..... Associate Producer/Director of New Play Production  
 ANN E. WAREHAM ..... Associate Producer  
 PIER CARLO TALENTI ..... Resident Dramaturg/Literary Manager  
 MIKE SABLONE ..... Literary Associate  
 JESUS REYES ..... New Play Production Associate  
 COREY MADDEN ..... Associate Artist

ROBERTO AGUIRRE-SACASA, FRANK BASLOE, KEITH BUNIN (Fadiman Award), STEVE CUIFFO, ELLEN FITZHUGH, MICHAEL FRIEDMAN, KATE FODOR, MELISSA JAMES GIBSON, JESSICA GOLDBERG, PETER GOLUB, STEPHEN ADLEY GUIRGIS (Fadiman Award), LISA KRON, MICHAEL JOHN LaCHIUSA, LISA LOOMER, TREV LYFORD, TIM MCNEIL, RICHARD MONTOYA (for Culture Clash), LOUIE PEREZ, RICHARD NELSON, ROBERT REALE, WILLIAM REALE, ERIC ROSEN, MATT SAX, GEOFF SOBELLE ..... Commissioned Artists

ROBERTO AGUIRRE-SACASA, MICKY BIRNBAUM, JOSEPH FISHER, MICHAEL JOHN GARCÉS, DONALD JOLLY, EVANGELINE ORDAZ, MATT PELFREY, ADRIANA SEVAN ..... CTG Writers' Workshop Members

**PERFORMING FOR LOS ANGELES YOUTH (P.L.A.Y.)**

LESLIE K. JOHNSON ..... Director of Education and Outreach  
 DEBRA PIVER ..... Associate Director of Education  
 KIMIKO L. BRODER ..... Educational Programs Manager  
 RACHEL FAIN ..... Editorial Manager  
 PATRICIA GARZA ..... Department Manager  
 DAN HARPER ..... Educational Programs Associate  
 CHRISTINE MANTILLA ..... Educational Programs Coordinator

**CASTING**

ERIKA SELLIN ..... Director  
 BONNIE GRISAN ..... Associate Director  
 TAD SHAFER ..... Assistant

**MANAGEMENT & ADMINISTRATION**

NAUSICIA STERGIOU ..... Associate General Manager  
 JEFFREY UPAH ..... Associate General Manager  
 HEIDE JANSSEN ..... Assistant General Manager  
 EMILIE BECK ..... Associate Manager  
 LINDSAY ALLBAUGH ..... Executive Assistant to Mr. Ritchie  
 ALANA BEIDELMAN ..... Executive Assistant to Mr. Dillingham  
 SUZANNE HEE MAYBERRY ..... Associate Manager (Taper)  
 DAVID BARNATHAN ..... Executive Assistant to the General Manager  
 ERIC SIMS ..... Operations Manager (Douglas)  
 TOM BURMESTER ..... Performance Manager (Douglas)  
 MIKE KINDLE ..... Facilities Assistant (Douglas)  
 KATIE BRUNER SOFF ..... Company Manager (Douglas)  
 SONDR A MAYER ..... Concessions Manager (Douglas)

**PRODUCTION**

ALYS E. HOLDEN ..... Director of Production  
 CELESTE SANTAMASSINO ..... Production Manager (Douglas)  
 JAMIE THOMA ..... Assistant Production Manager (Douglas/P.L.A.Y.)  
 SHANNON NICKERSON ..... Technical Director (Douglas)  
 RICHARD PETERSON ..... Master Electrician (Douglas)  
 ADAM PHALEN ..... Head Audio (Douglas)  
 CASEY K. CLARK ..... Production Operations Manager  
 GUSTAVO MENDOZA ..... Transportation Director  
 AFLAMU JOHNSON ..... Driver  
 JULIO A. CUELLAR ..... Custodian  
 MELODY MATTOS ..... Production Business Manager

DAWN HOLISKI ..... Prop Director  
 MICHELLE PHIPPS ..... Associate Prop Coordinator  
 KRISTINA GRANT ..... Props Artisan  
 ANDREW THIELS ..... Assistant Prop Coordinator

CANDICE CAIN ..... Costume Shop Director  
 DIAN CAMARILLO ..... Costume Shop Coordinator  
 KATHY CHRISTIANSEN ..... Draper  
 DIANNE K. GRAEBNER ..... Milliner/Crafts/Dyer  
 ELIZABETH A. COX ..... Shopper

JONATHAN BARLOW LEE ..... Production Manager (Taper)  
 JOE HAMLIN ..... Technical Director (Taper)  
 JESSE AASHEIM ..... Associate Production Manager (Taper)  
 HOWARD DOLAN ..... Master Carpenter (Taper)  
 ROBERT RUBY ..... Master Propertyman (Taper)  
 WILLIAM MORNER ..... Master Electrician (Taper)  
 BONES MALONE ..... Master Soundman (Taper)  
 MICHAEL GARDNER ..... Wardrobe Supervisor (Taper)  
 LINDA WALKER ..... House Manger (Taper)

DANA VASQUEZ-EBERHARDT ..... Assistant Production Manager (Ahmanson)  
 TERRY CALLAWAY ..... Master Electrician (Ahmanson)  
 STAN STEELMON ..... Master Propertyman (Ahmanson)  
 ROBERT SMITH ..... Master Soundman (Ahmanson)  
 SHAWN ANDERSON ..... Flyman (Ahmanson)  
 DENNIS SEETOO ..... Wardrobe Supervisor (Ahmanson)  
 MICHELE ARVIZO ..... Hair Supervisor (Ahmanson)  
 CHRISTINE L. COX ..... House Manager (Ahmanson)

**FINANCE, INFORMATION SYSTEMS AND HUMAN RESOURCES**

MICHAEL F. THOMPSON ..... Director of Finance  
 DANA KELLY ..... Controllor  
 JANIS BOWBEER ..... Assistant Controllor  
 FELICISIMA LAPID ..... Accounts Payable Supervisor  
 ALEGRIA SENA ..... Staff Accountant  
 DANNY LAMPSON ..... Staff Accountant  
 KACEY CAMP ..... Administrative Assistant  
 SARAH VENUTI YATES ..... Payroll Supervisor  
 YUEN KI "ANNIE" LAW ..... Payroll Specialist

DAVE ALTON ..... Chief Information Officer  
 STAN GRUSHESKY ..... Director of Information Systems  
 SEAN PINTO ..... Patron Database Administrator  
 ROSE POIRIER ..... Webmaster  
 RANDOLPH LIM ..... Senior System Administrator

MILES TEVES ..... Human Resources Manager  
 ALLISON MORRELL ..... Office Manager  
 DAMON JOSEPH ..... Office Services  
 SINGER LEWAK GREENBAUM & GOLDSTEIN, LLP ..... Auditor  
 MICHAEL C. DONALDSON, LISA A. CALLIF ..... Legal Counsel  
 GIBSON, DUNN & CRUTCHER ..... Legal Counsel

**DEVELOPMENT**

YVONNE CARLSON BELL ..... Director of Development  
 PATRICK OWEN ..... Deputy Director of Development  
 NATALIE BERGESON ..... Director of Donor Contributions  
 JEAN LAMBORN KLING ..... Director of Institutional Support  
 LIZ LIN ..... Director of Donor Communications  
 BRUCE W. RISE ..... Director of Major Gifts  
 CHARITY WU ..... Director of Individual Giving  
 BECKY BIRDSONG ..... Associate Director of Donor Relations  
 KIM LA TOUR ..... Associate Director of Corporate Giving  
 STEFANIE ABRAMSON ..... Special Events Manager  
 SANDRA EBEJER ..... Grants Manager  
 MANDY RATLIFF ..... Development Database Manager  
 REGINA WILLIAMSON ..... Major Gifts Officer  
 ALLISON FEDER ..... Development Assistant  
 CAITIE HANNON ..... Grants Associate  
 DONALD JOLLY ..... Donor Relations Assistant  
 ANNA LAM ..... Communications Associate  
 ANA ROSE O'HALLORAN ..... Donor Relations Associate  
 HELEN OTA ..... Executive Assistant to the Development Director  
 ASHLEY RUMBURG ..... Corporate Giving Coordinator  
 BILL WALTON ..... Donor Contributions Supervisor  
 ERIN SCHLABACH ..... Donor Contributions Assistant  
 JENNIFER YIRAK ..... Major Gifts Coordinator

AL BERMAN, GINA EAST, JULIETTE GARRISON, RICK LEE, NANCY NOVAK, JUAN PEREZ, HOLLY RAMOS, BARBARA ROBERTS ..... Donor Advisors  
 ADAM BURCH, KARLA GALVEZ ..... Donor Services Associates

**MARKETING & COMMUNICATIONS**

JIM ROYCE ..... Director of Marketing and Communications  
 NANCY HEREFORD ..... Press Director  
 PHYLLIS MOBERLY ..... Senior Press Associate  
 JASON MARTIN ..... Press Associate  
 KEN WERTHER ..... Press Associate  
 DELPHINE VASKO ..... Press Associate

CHRISTOPHER KOMURO ..... Art Director  
 IRENE KANESHIRO ..... Senior Designer  
 CHARITY CAPILI, NISHITA DOSHI, HARUKA HAYAKAWA ..... Graphic Designers

MICHAEL ANDERSON ..... Advertising & Promotions Director  
 NELLA VERA ..... Associate Director of Marketing  
 C. RAUL ESPINOZA ..... Audience Development Manager  
 JEREMY GOLDSTEIN ..... Interactive Production Manager  
 KIM VARHOLA ..... Associate Manager, Events & Promotions  
 KRISTEN BARDWIL ..... Advertising Associate  
 MICHAEL BULGER ..... Marketing Coordinator

**TICKET SALES AND SERVICES**

JOSEPH CARTER ..... Ticket Sales Director  
 SKYPP CABANAS ..... Ticket Operations Coordinator

SANDY CZUBIAK ..... Audience and Subscriber Services Manager  
 JENNIFER BAKER, CHERYL HAWKER, SCOTT TAYLOR ..... Audience Services Supervisors  
 ALICE CHEN ..... Audience Services Asst. Supervisor  
 SAM AARON, LIZ ALAN, CARRIE BRADAC, ZAND BROUMAND, RJ CANTU, CARLOS D. CHAVEZ, JR., PETER COLBURN, HESPER COLOHAN, DONALD CRANDALL, EMIL LIN, KAY LOCHARD, JUSTINE PEREZ, RICHARD RAGSDALE, DEBORAH REED, LEX SAVKO, TRAVIS WOOD ..... Audience Services Representatives

DANUTA SIEMAK ..... Subscriber Services Supervisor  
 CHRISTINA GUTIERREZ ..... Subscriber Services Asst. Supervisor  
 LIGIA PISTE, CELIA RIVAS ..... Subscriber Services Senior Representatives  
 IRENE CHUANG, PETER STALOCH ..... Subscriber Services Representatives

SARAH K. GONTA ..... Box Office Treasurer  
 KISHISA ROSS, GISELE FRAZEUR ..... Assistant Treasurers  
 YULIZA BARRAZA, ANGELICA CERDA, MICHAEL KEMPISTY, LEROY PAWLOWSKI, DAVID LEE PERKINS, MICHAEL SALTZMAN, GEORGE SOVIK ..... Box Office Staff

LINDA FONSECA ..... Group Services Manager  
 NIIKA TANIGUCHI ..... Senior Group Services Agent  
 NADJAH DABNEY, MICHAEL HURLEY ..... Group Services/Outreach Sales Agents

KERRY KORF ..... Priority Services Director  
 SUSAN F. TULLER ..... Priority Services Manager  
 PAUL CUEN ..... Priority Services Supervisor  
 JAY BURNS ..... Assistant Priority Services Manager

CAROLE BAXTER, JENNIFER "NICOLE" BOKOCH, LYNN BOMMER, MARC "BYRON" DROTMAN, CAROLYN "DANIELLE" DYER, LOU GEORGE, KATE HALL, JERRY JOHNSTON, EDWIN KLEIN, SHEP KOSTER, PAUL "JOSEPH" MARCOUX, JOANN PAOLANTONIO, CAROL "COLETTE" PORETZ, MATT PELFREY, EDWARD "MAX" RAZOR, KEN SALLEY, BOBBI LYNNE SCOTT, MICHAEL SMITH, JEFFREY STUBBLEFIELD, GREG TITTINGER, DOUGLAS WOODS ..... Representatives